

SafeLine Fire

*FIRE_MAIN

The intelligent fire intercom system

SafeLine Fire is a firefighting intercom unit with connections for up to four fire stations: main entrance landing, lift car, machine room and additional landing or firefighting control room. This main unit is intended for mounting in the lift's machine room.

SafeLine Fire's intercom stations can be ordered with a company logo for a more uniform and customized feel.

Technical information

Up to four intercom stations per lift
Housed in rugged metal box
LED for visual indication of the system
Easy wiring and installation
Integrated battery backup

Technical data

Power supply

230VAC

Current consumption

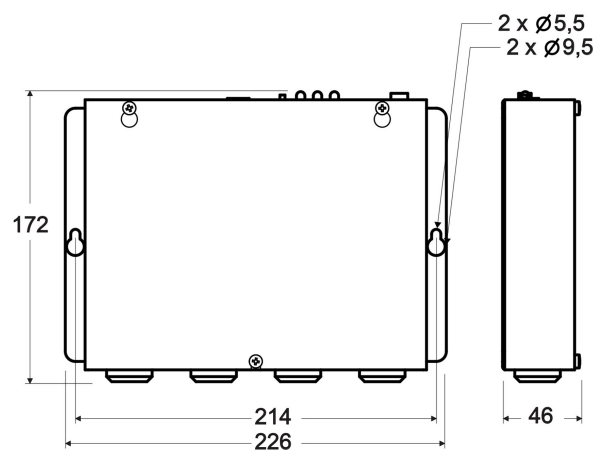
50mA

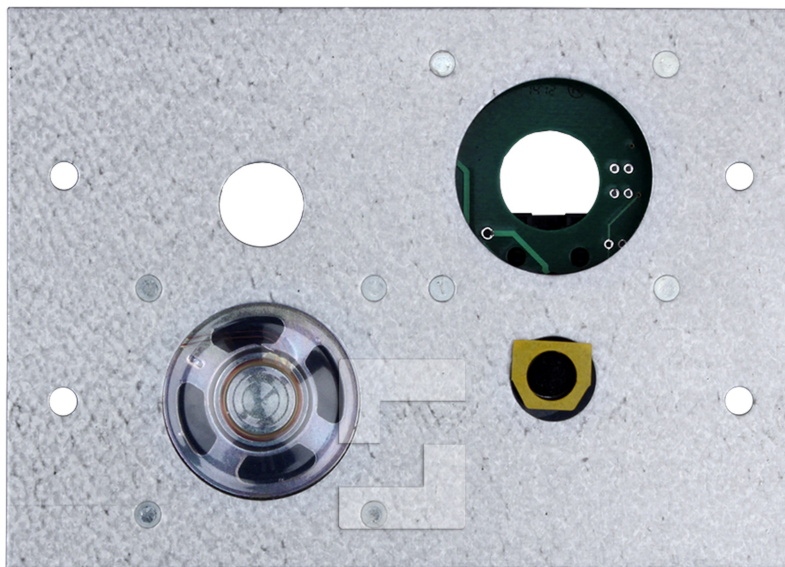
Size (HxWxD)

182 x 226 x 54 mm

Weight

172 x 226 x 46 mm





SafeLine Fire car station

*FIRE_REM1

Unit for installing in car.

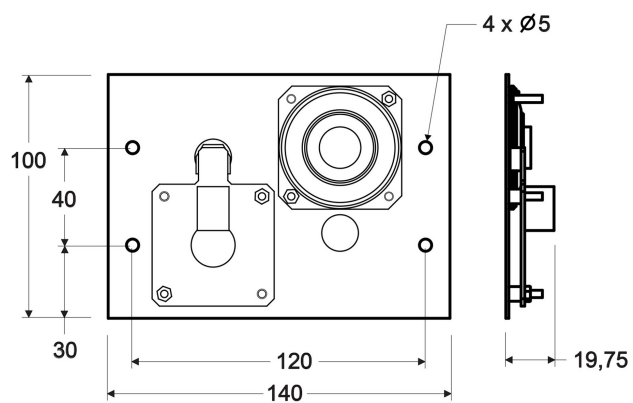
No front plate is included. Customized front plate is made on request. Speaker is included in delivery, but no buttons are included.

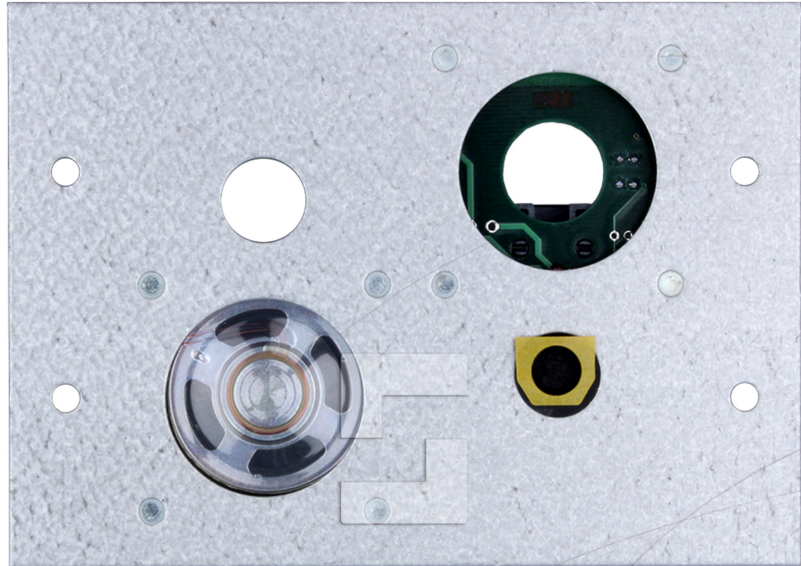
Technical information

Technical data

Size (HxWxD)

100 x 140 x 20 mm





SafeLine Fire entrance station

*FIRE_REM3

Unit for installing on entrance floor.

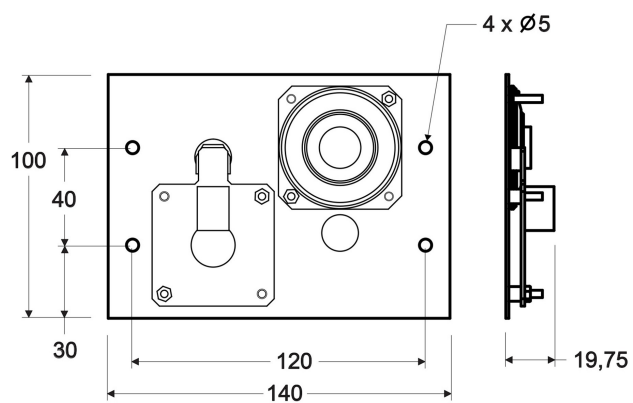
No front plate is included. Customized front plate is made on request. A fireman's switch is connected to this unit. Speaker is included in delivery, but no buttons are included.

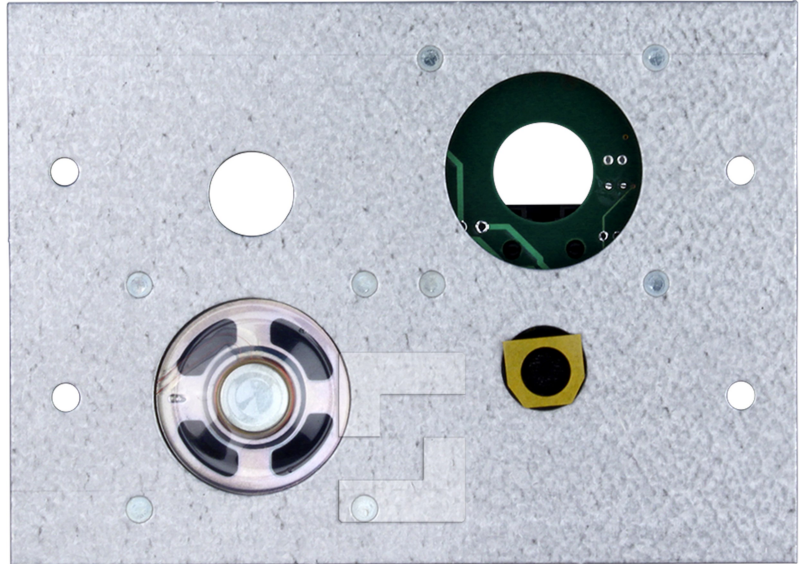
Technical information

Technical data

Size (HxWxD)

100 x 140 x 20 mm





SafeLine Fire landing station

*FIRE_REM2

Unit for installing on landing floor.

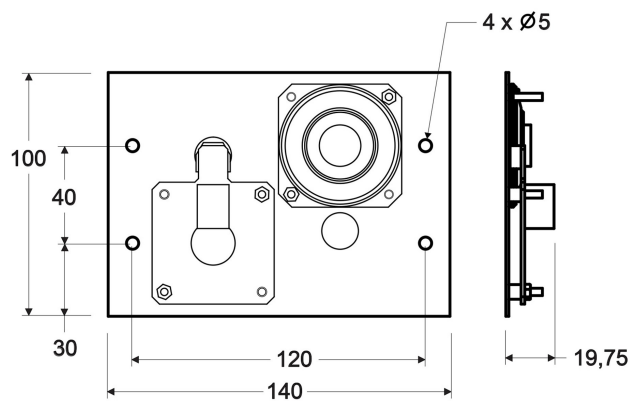
No front plate is included. Customized front plate is made on request. Speaker is included in delivery, but no buttons are included.

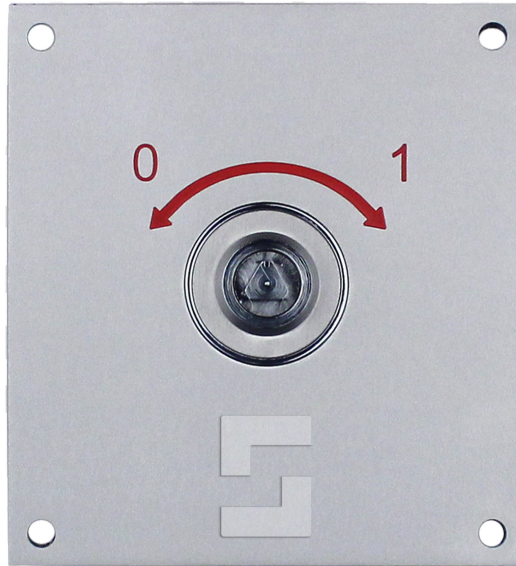
Technical information

Technical data

Size (HxWxD)

100 x 140 x 20 mm





SafeLine SL6+ FIRE key switch, flush mounting

**Flush mount key switch for use with
SafeLine SL6 Fire products.**

Triangular key switch mounted on
stainless steel front plate on entrance
floor.

*SLB-REC-FIREK

Technical information

Triangular key switch for fireman's intercom

Front plate in brushed stainless steel for flush mount

Compatible with
SLB-Rec-Fire/SLB-Rec-Fire02

Technical data

Connector

2 x N/O

Effect

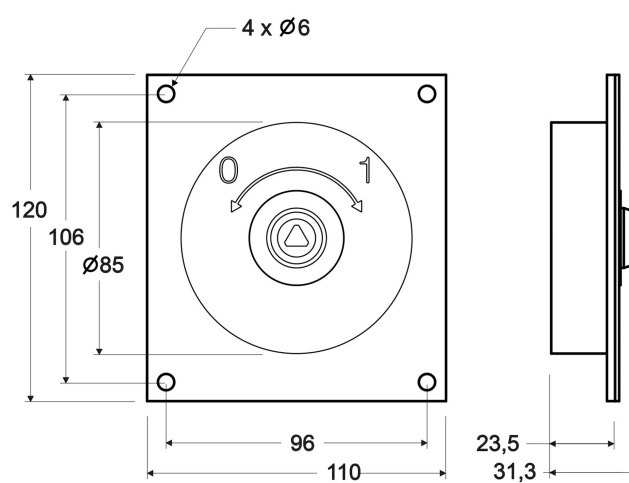
0,18W

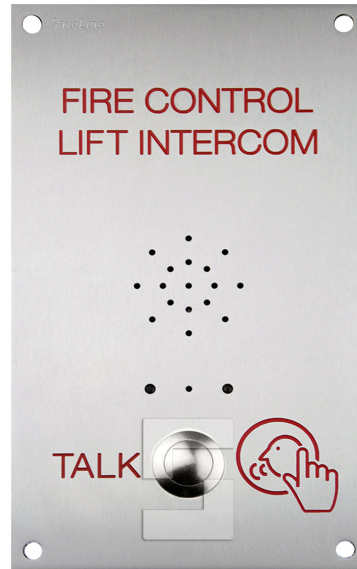
Size (HxWxD)

120 x 110 x 31 mm

Weight

330 g





SafeLine SL6+ FIRE station, flush mounting

*SLB-REC-FIRE02

SLB-REC-FIRE02 is a voice station for SL6 suitable for fireman's intercom.

The unit is made for flush mounting but can be used with a stainless steel frame and surface mounted as a landing station, or to be combined with a key switch SLB-REC-FIREK on the entrance floor. Once the keyswitch is turned, communication is established between all units included in the intercom system. The fire brigade can then easily communicate and evacuate trapped persons.

SLB-REC-FIRE02 can be combined with an existing installation of SL6 and is perfect for use when certain floor needs extra attention in case of a fire, for example to facilitate evacuation of persons unable to take the stairs.

Technical information

Microphone and speaker for fireman's intercom

Flush mounted or with frame for surface mounting

Can be combined with triangular key switch

Connect to existing SL6 installation

Bus system – only four wires to the main unit

Adjustable speaker volume

Technical data

Current consumption

15 mA nominal

Effect

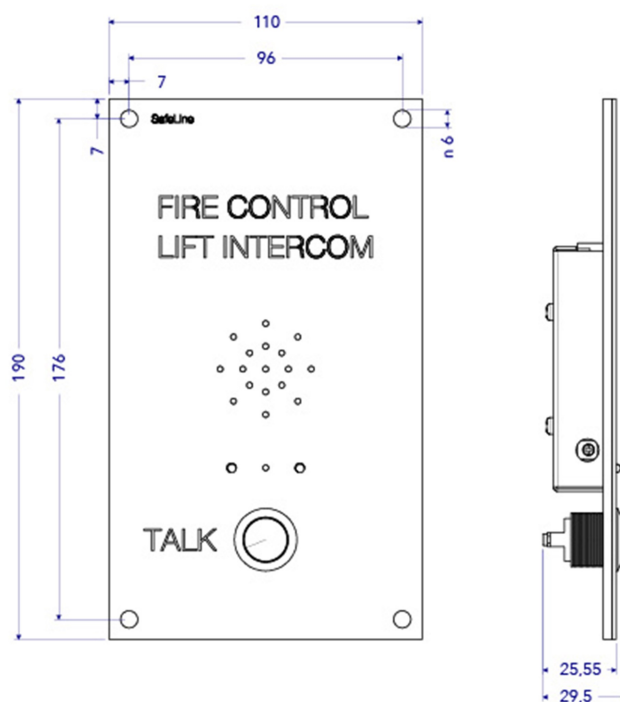
0,18W

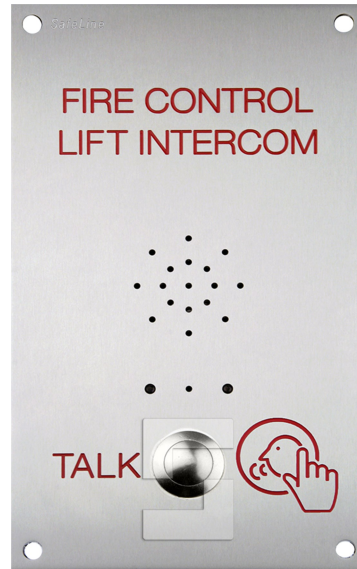
Size (HxWxD)

190 x 110 x 28 mm

Weight

630 g





SafeLine SL6+ FIRE station, flush mounting

*SLB-REC-FIRE02

**SLB-REC-FIRE02 is a voice station
for SL6 suitable for fireman's
intercom.**

The unit is made for flush mounting but can be used with a stainless steel frame and surface mounted as a landing station, or to be combined with a key switch SLB-REC-FIREK on the entrance floor. Once the keyswitch is turned, communication is established between all units included in the intercom system. The fire brigade can then easily communicate and evacuate trapped persons.

SLB-REC-FIRE02 can be combined with an existing installation of SL6 and is perfect for use when certain floor needs extra attention in case of a fire, for example to facilitate evacuation of persons unable to take the stairs.

Technical information

Microphone and speaker for fireman's intercom

Flush mounted or with frame for surface mounting

Can be combined with triangular key switch

Connect to existing SL6 installation

Bus system – only four wires to the main unit

Adjustable speaker volume

Technical data

Current consumption

15 mA nominal

Effect

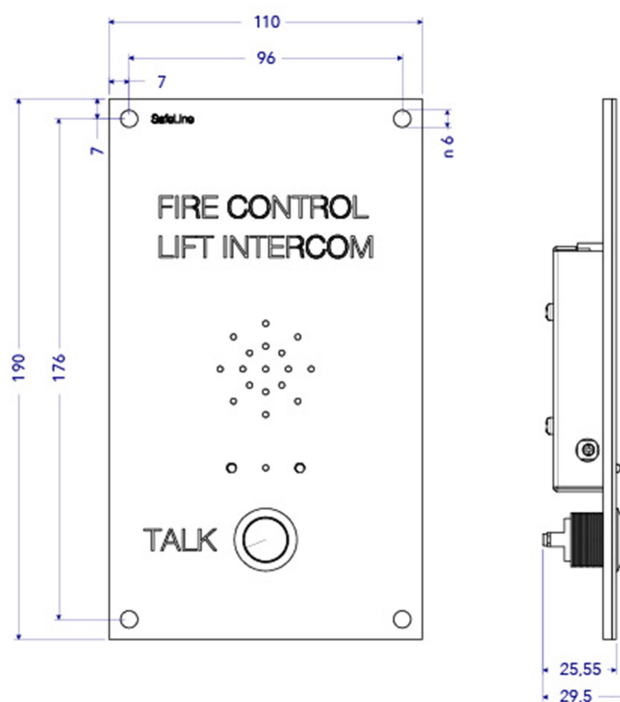
0,18W

Size (HxWxD)

190 x 110 x 28 mm

Weight

630 g





SafeLine SL6+ FIRE station, flush mounting with key switch

*SLB-REC-FIREK02

The voice station for SL6 suited for fire communication with an integrated key switch

This unit is intended for mounting on the entrance level and has an integrated key switch. Once the key switch is turned, communication is established between all units included in the intercom system. The fire brigade can then easily communicate and evacuate trapped persons.

SLB-REC-FIRE can be combined with an existing installation of SL6 and is perfect for use when certain floor needs extra attention in case of a fire, for example to facilitate evacuation of persons unable to take the stairs.

Technical information

Integrated key switch
Integrated microphone and speaker
Vandal-proof flush mounting
Easy to combine with existing SL6 installation
Bus system – only four wires to the main unit

Technical data

Effect

0,18W

Size (HxWxD)

310 x 110 x 31 mm

Weight

980 g

