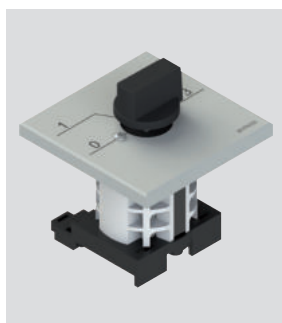
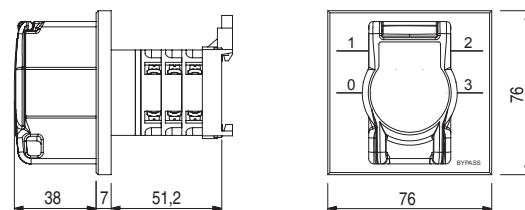


Bypass switches



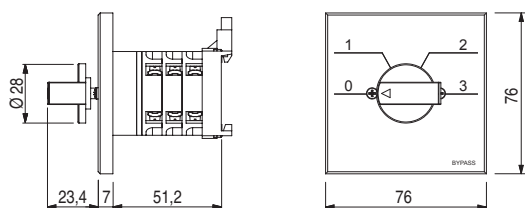
Article	Description
EH AC-003	4-position switch for bypass with padlockable guard, collar with engraving and DIN rail fixing base

External dimensions:



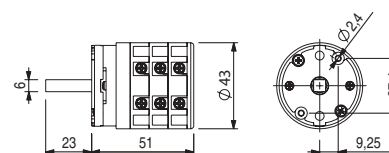
Article	Description
EH AC-006	4-position switch for bypass with collar with engraving and DIN rail fixing base

External dimensions:



Article	Description
EH AC-005	4-position switch for bypass with padlockable guard, for panel fixing

External dimensions and mounting holes:



For external dimensions and device mounting holes for padlockable guard, see page 111.

General data

Ambient temperature:	-20°C ... +50°C
Mechanical endurance:	500,000 operating cycles at 120 operating cycles/hour
Material of the contacts:	Silver contacts
Tightening torque of the terminal screws:	1.2 Nm
Thermal current (I_{th}):	16 A
Rated insulation voltage (U_i):	660 Vac
Rated impulse withstand voltage (U_{imp}):	4 kV
Cross-section of stranded wire:	min. 1 x 0.5 mm ² max. 2 x 2.5 mm ²

Position	Contact diagram					
	1-2	3-4	5-6	7-8	9-10	11-12
0	X					X
1		X			X	
2			X		X	
3				X	X	

X = closed contact
Other contact configurations available on request.

Rated operating current I_e : alternating current (50/60 Hz)					
Vac	AC-21A	AC23A		AC-3	
		1PH	3PH	1PH	3PH
110-120	16 A	0.5 kW	/	0.4 kW	/
220-240	16 A	0.9 kW	2.6 kW	0.75 kW	2.2 kW
380-400	16 A	1.5 kW	7.5 kW	1.3 kW	5.5 kW